

The right way to attach almost anything to metal roofs!

S-5![®]

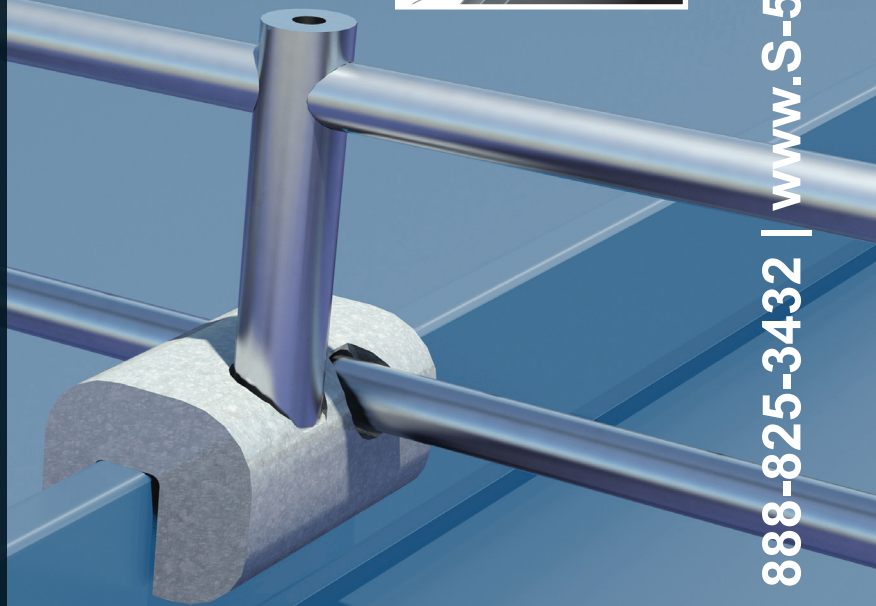
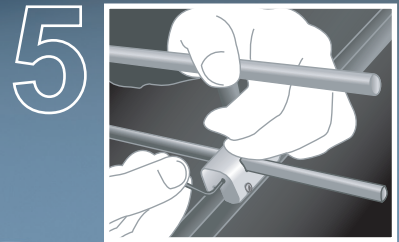
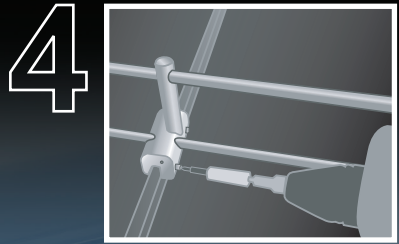
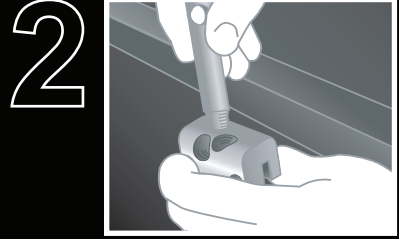
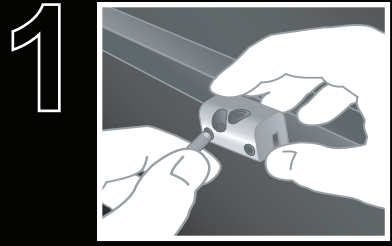
The Right Way!

Why Snow Retention?

When snow accumulations begin to melt, the result can be catastrophic as the blanket of snow avalanches off the roof, dumping tons of snow onto anything in its path, damaging landscape, gutters, adjacent roofs, and vehicles, and causing injury or death to passers-by. SnoRail™ and SnoFence™ can dramatically reduce these risks associated with rooftop avalanches, maintaining the clean lines of the roof and lasting as long as the roof itself! SnoRail and SnoFence can be designed and engineered on a site-specific basis.

Why SnoRail™/SnoFence™?

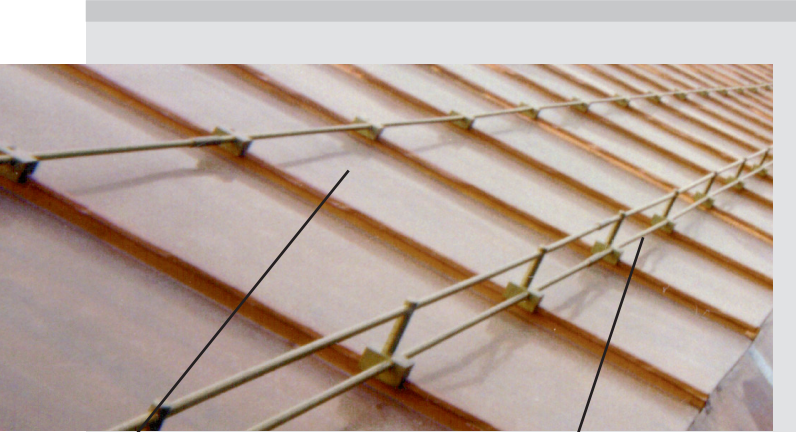
Architects and roof designers agree: the clean lines, cylindrical shapes and high-tech look of our SnoRail and SnoFence systems present an attractive solution to snow retention problems! They function without cluttering the lines of the roof. With up to six times the strength of adhesively-mounted devices, and without the high labor costs and inconsistencies of soldered snow guards, S-5![®] offers the perfect, long term, dependable solution for traditional standing seam and sheet copper roofing. The SnoRail and SnoFence systems are mechanically attached with S-5! clamps utilizing our round-point setscrews—designed not to “pin” or “fix” the roof panels to the building, leaving thermal movement unrestricted.



S-5![®]

The Right Way!

Whether aluminum or brass, our SnoRail™ and SnoFence™ systems offer a sleek, stylish design. Utilizing patented S-5![®] clamp technology, this snow retention system doesn't pierce the metal roofing, thereby protecting roof coatings and weather-tightness warranties.



SnoRail – Brass

SnoFence – Brass

The **SnoRail™ and SnoFence™** system is available in brass for use on copper batten or standing seam roofs and in aluminum for other standing seam roofing materials.

SnoRail™

One SnoRod™* is inserted through the S-5-A SF or S-5-B SF clamps, positioning it just above the panel seams. The resulting assembly is called SnoRail. SnoRod is available in brass and stainless steel.

SnoFence™

With an assembled SnoRail System, simply thread one SnoPost™ into the S-5-A SF or S-5-B SF clamp, and then add a second SnoRod two inches above the first. The resulting double-rod assembly is called SnoFence. SnoPost is available in brass and stainless steel.

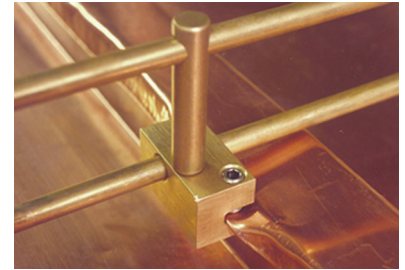
Installation is easy: The S-5![®] clamp mechanically attaches to the panel seam by inserting and tightening our patented round-point setscrews to the specified tension (see www.S-5.com). These setscrews will slightly dimple the seam material, but not pierce it. Our patented clamps offer durability unequaled by chemical bonds and adhesives that degrade with time and exposure.



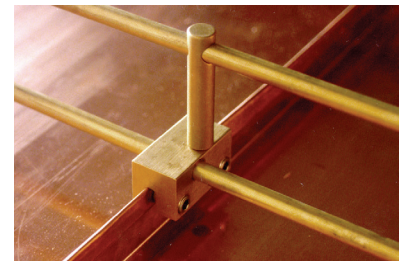
*Not supplied by S-5!

SnoRail™ and SnoFence™

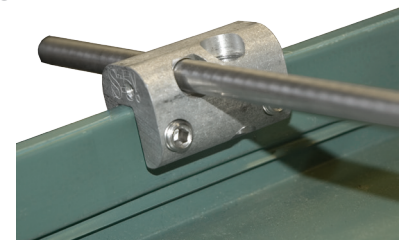
SnoFence – Brass on copper batten seam



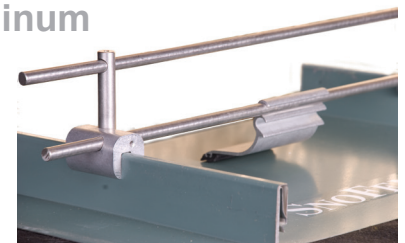
SnoFence – Brass on copper standing seam



SnoRail - Aluminum



SnoFence - Aluminum



S-5![®] Warning! Please use this product responsibly!

Products are protected by multiple U.S. and foreign patents. Visit the website at www.S-5.com for complete information on patents and trademarks. For maximum holding strength, setscrews should be tensioned and re-tensioned as the seam material compresses. Clamp setscrew tension should be verified using a calibrated torque wrench between 160 and 180 inch pounds when used on 22ga steel, and between 130 and 150 inch pounds for all other metals and thinner gauges of steel. Consult the S-5! website at www.S-5.com for published data regarding holding strength.

Copyright 2014, Metal Roof Innovations, Ltd. S-5! products are patent protected. S-5! aggressively protects its patents, trademarks, and copyrights. Version 102714.

Distributed by